

LONG TERM CLIMATE FINANCE WORKSHOP

Scaling up finance for adaptation actions



Dr. Paul Oquist Kelley

Member SCF

Minister

Private Secretary for National Policies
Presidency of the Republic of Nicaragua

May 18th, 2016

Bonn, Germany

\$SPX S&P 500 Large Cap Index INDX

© StockCharts.com

23-Oct-2015

Open 1919.65 High 2079.74 Low 1893.70 Close 2075.15 Volume 41.7B Chg +155.12 (+8.08%) ▲

S&P 500 Index U.S. Stocks over last 20 years

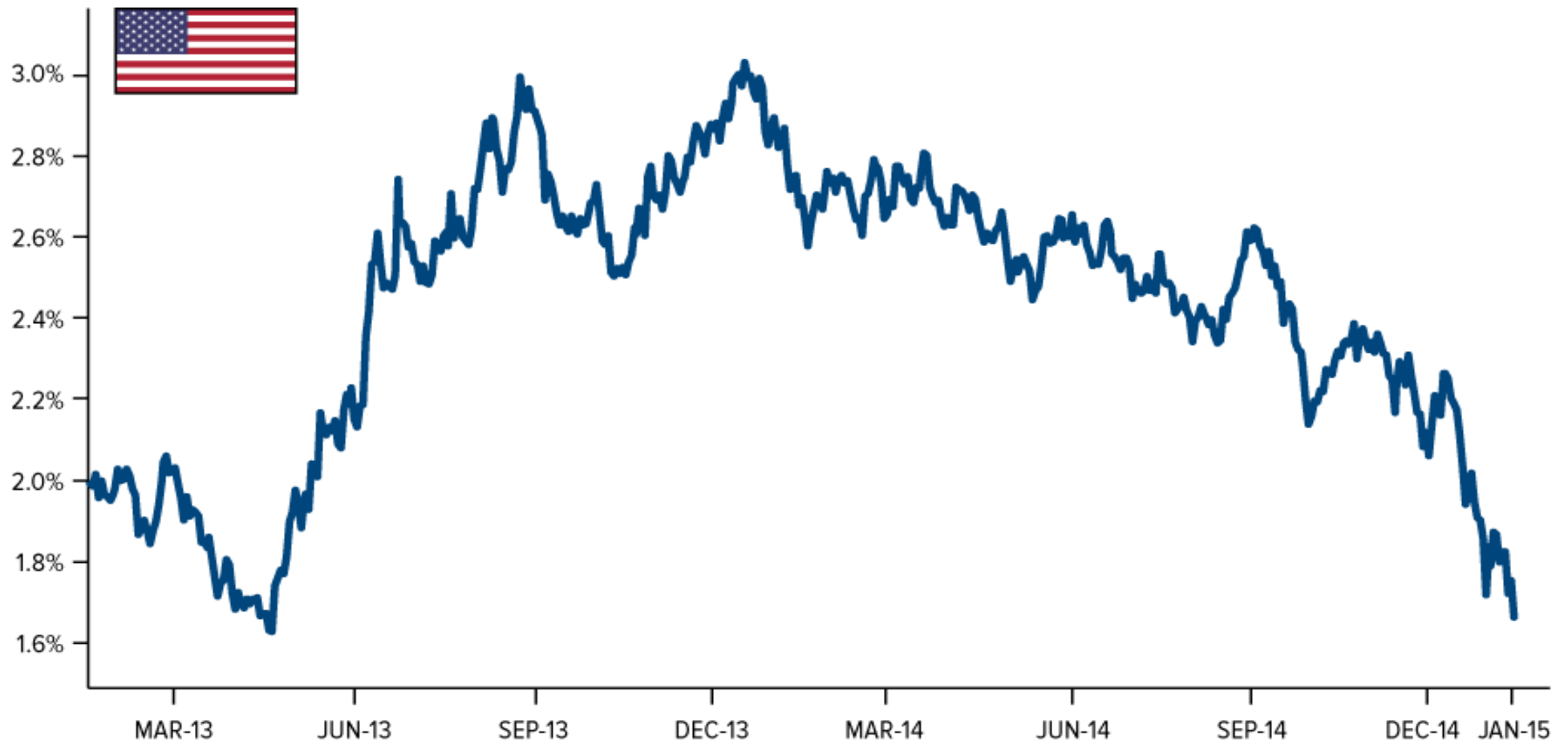


Germany (DAX INDEX) 11922.77 21.16

2015-03-18



U.S. 10-Year Bond Yield Dips to a 20-Month Low



Source: Bloomberg, U.S. Global Investors

GERMANY GOVERNMENT BOND 10Y



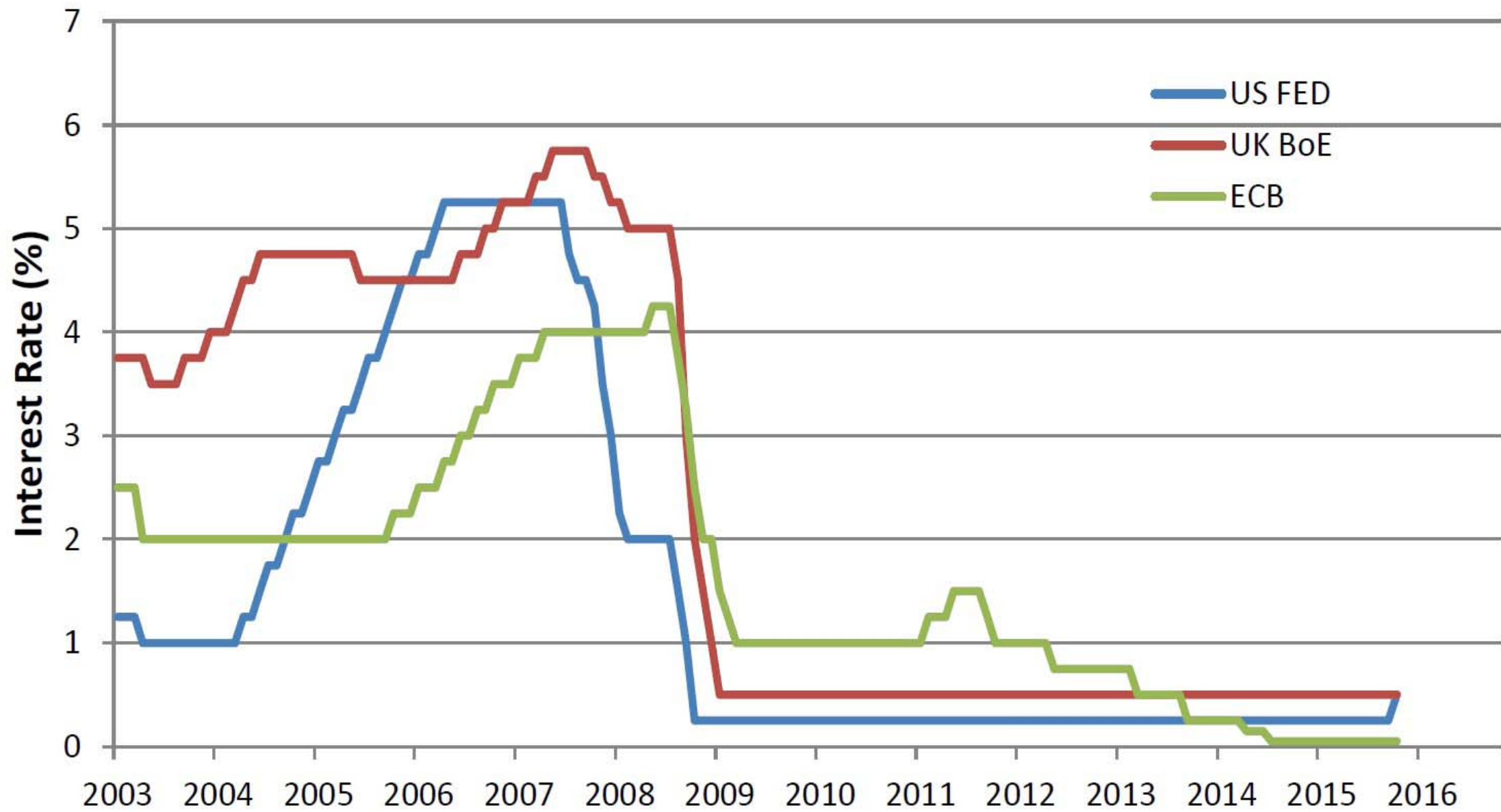
SOURCE: WWW.TRADINGECONOMICS.COM | GERMANY DEPARTMENT OF TREASURY

Negative bond yields

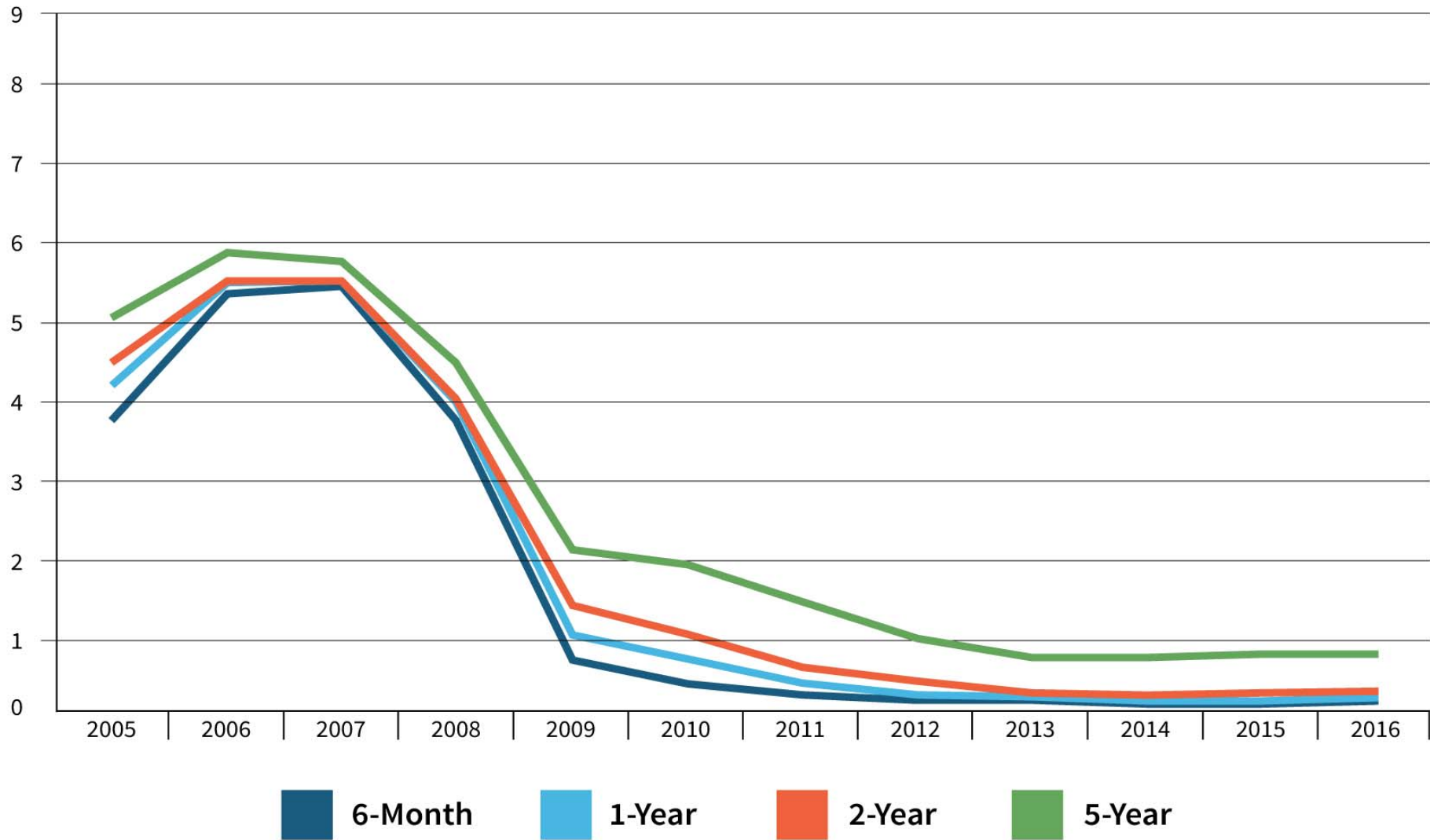
2-year benchmark government bond yield - percent

- Switzerland
- Germany
- France
- Netherlands

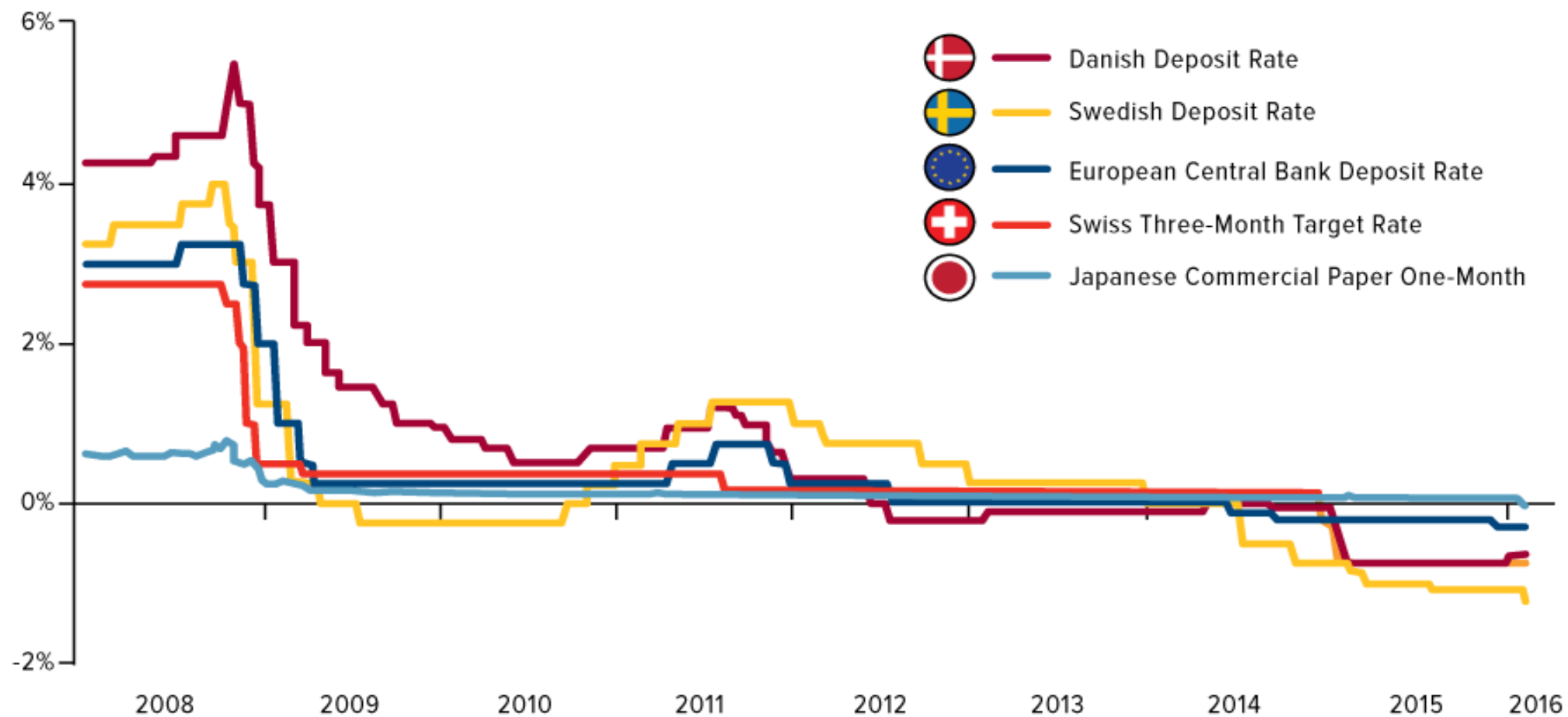




Historical CD Rates: 2005 to February 2016



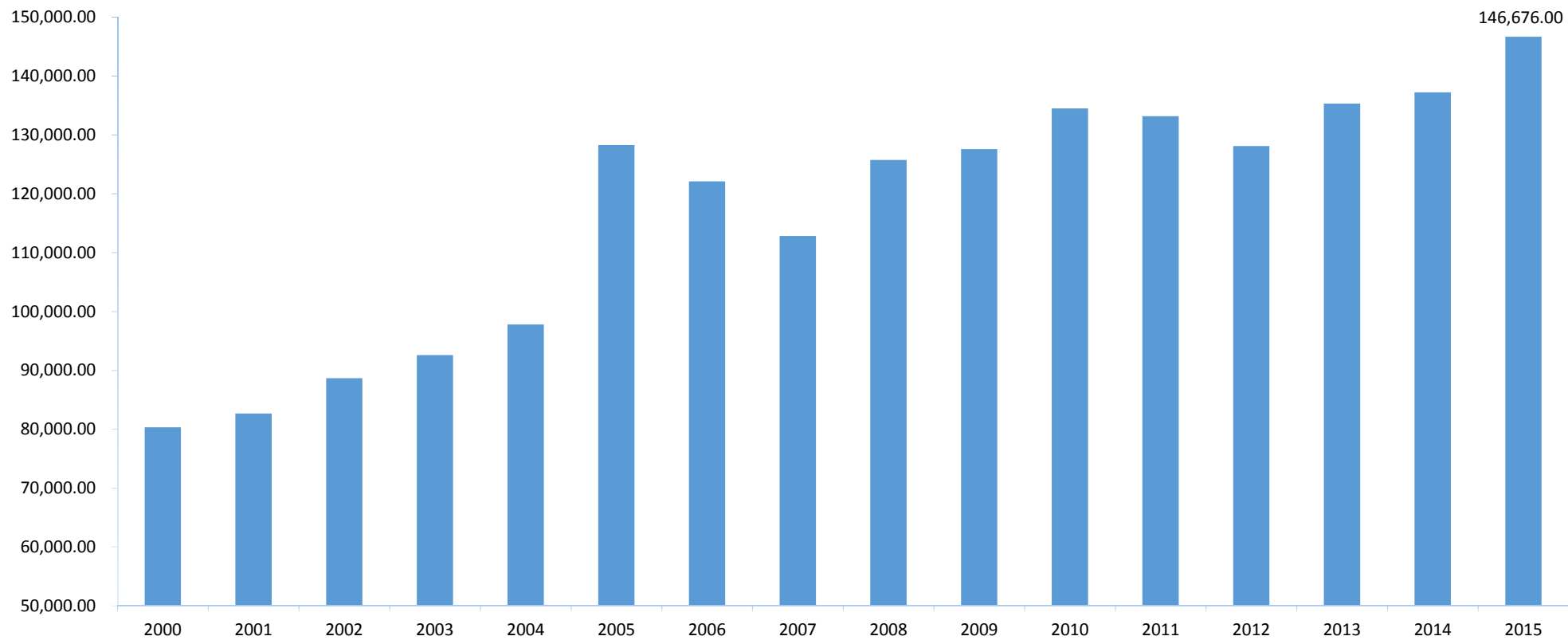
Key Negative Interest Rates



Source: Thomson Reuters, U.S. Global Investors

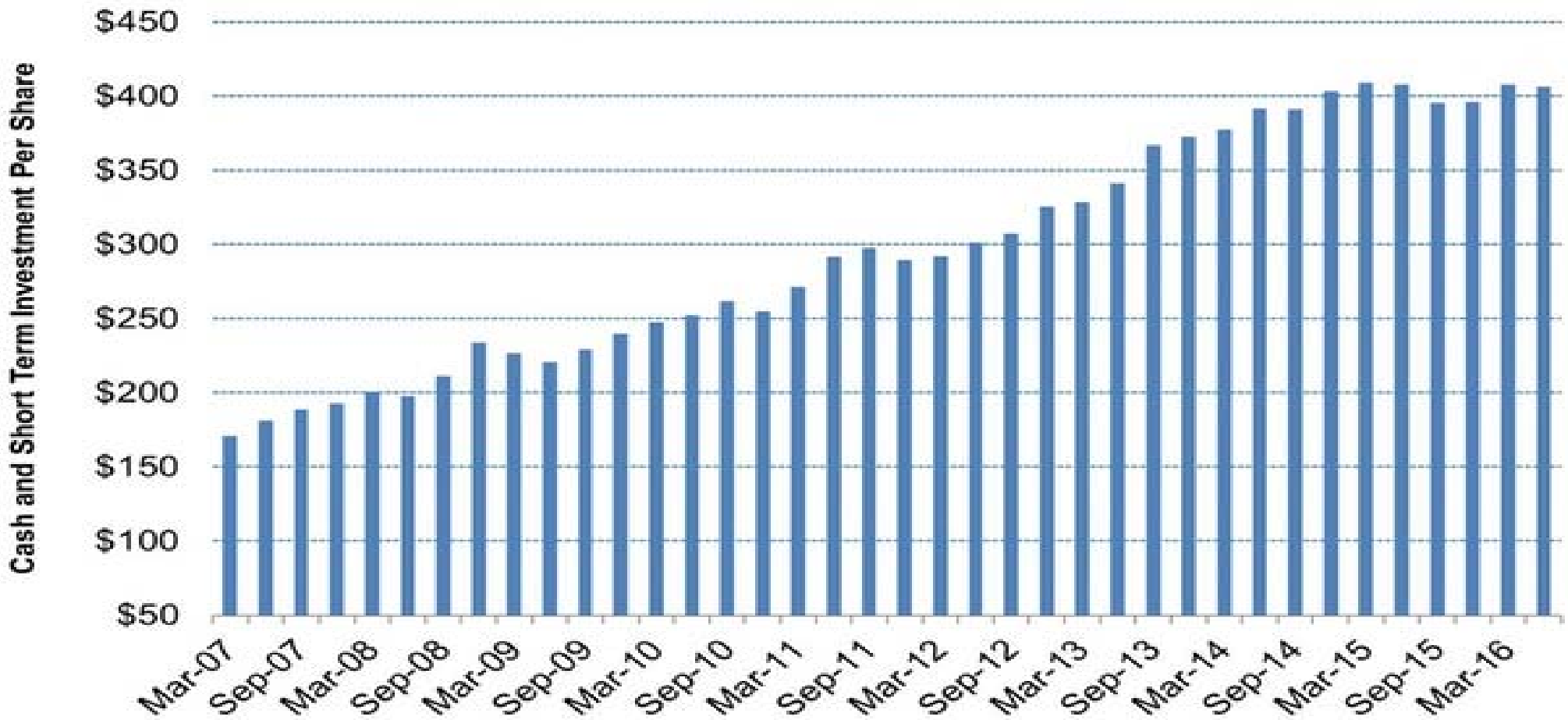
Ayuda Oficial al Desarrollo 2000-2015

(Millones de dólares)



Fuente: OECD

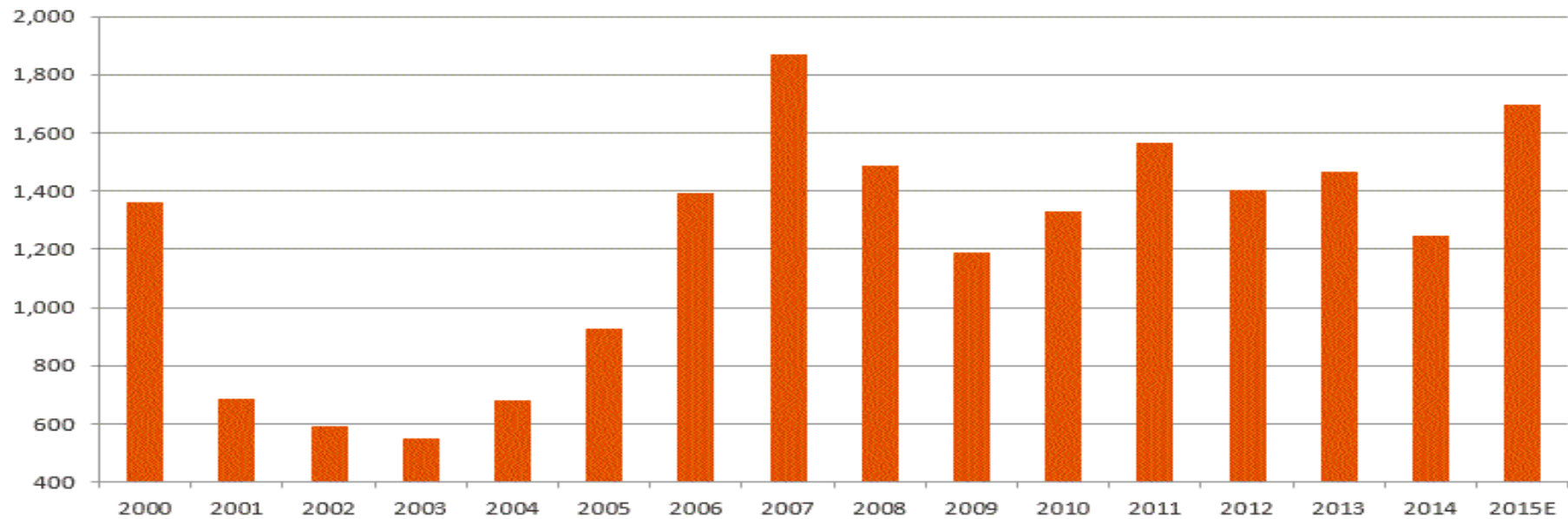
S&P 500 Index Cash and Short Term Investment Per Share



FDI inflows rebounded in 2015 . . .

World FDI inflows, 2000-15E

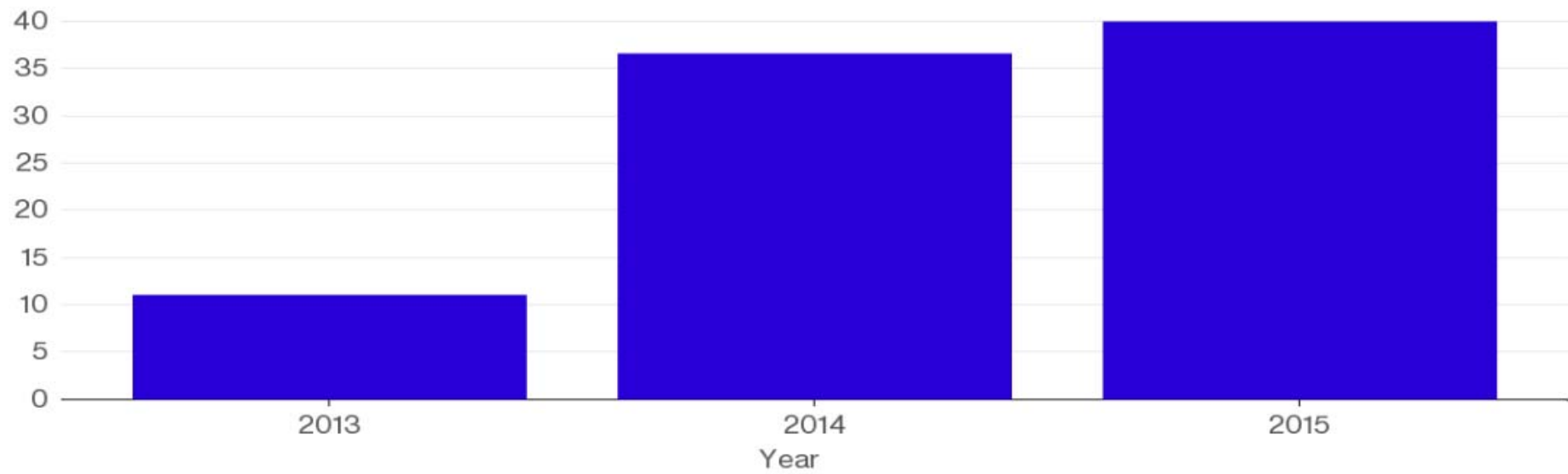
US\$ billions, current prices



Source: UNCTAD World Investment Report 2015, updated from 2014 from Table 1 in UNCTAD Global Investment Trends Monitor January 2016. Note Caribbean offshore financial centres are excluded.

Green Bonds Take Root

■ Global issuance in billions.

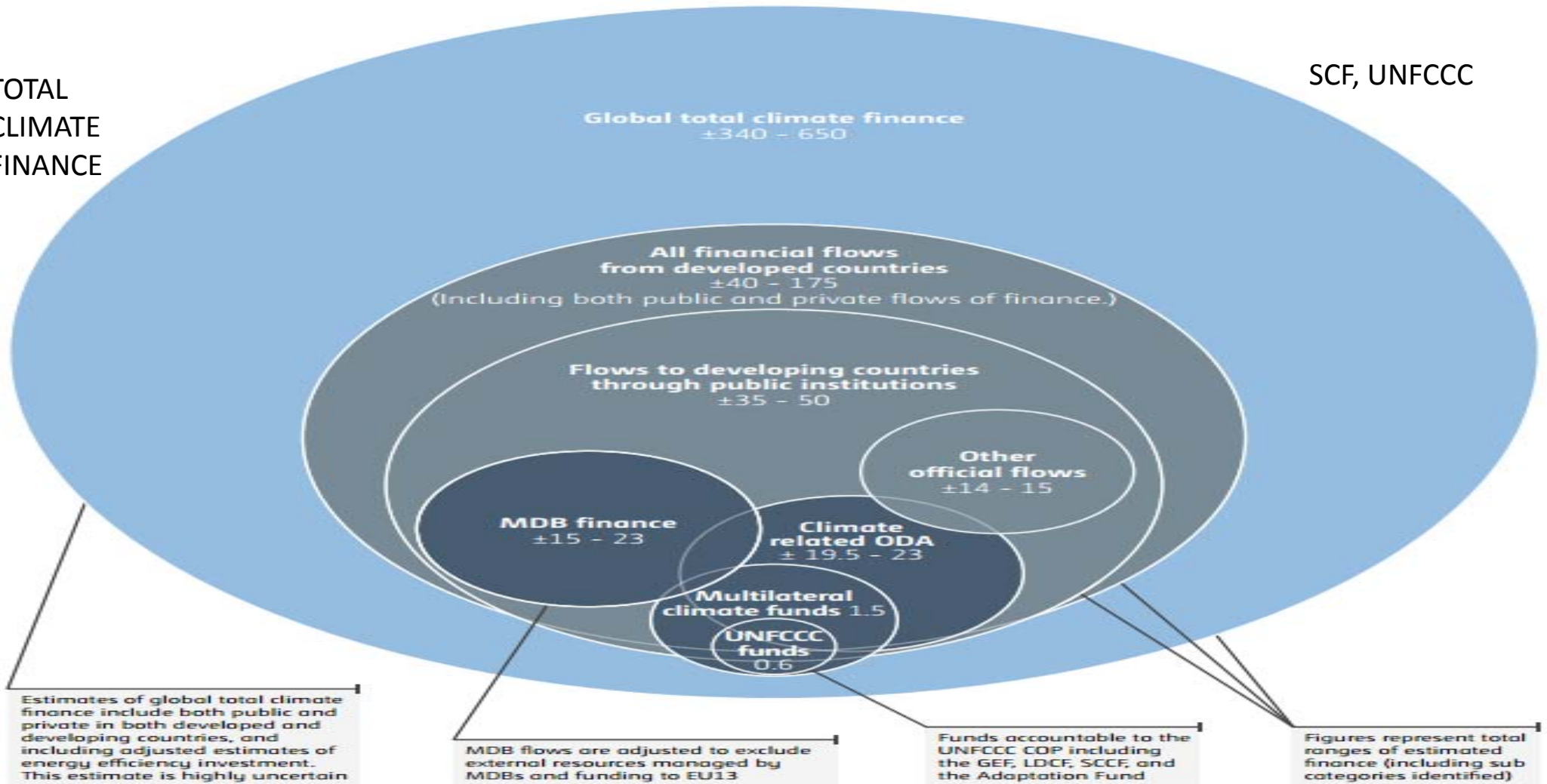


Sources: Moody's Investors Service, Central University of Finance and Economics

Bloomberg 

TOTAL
CLIMATE
FINANCE

SCF, UNFCCC



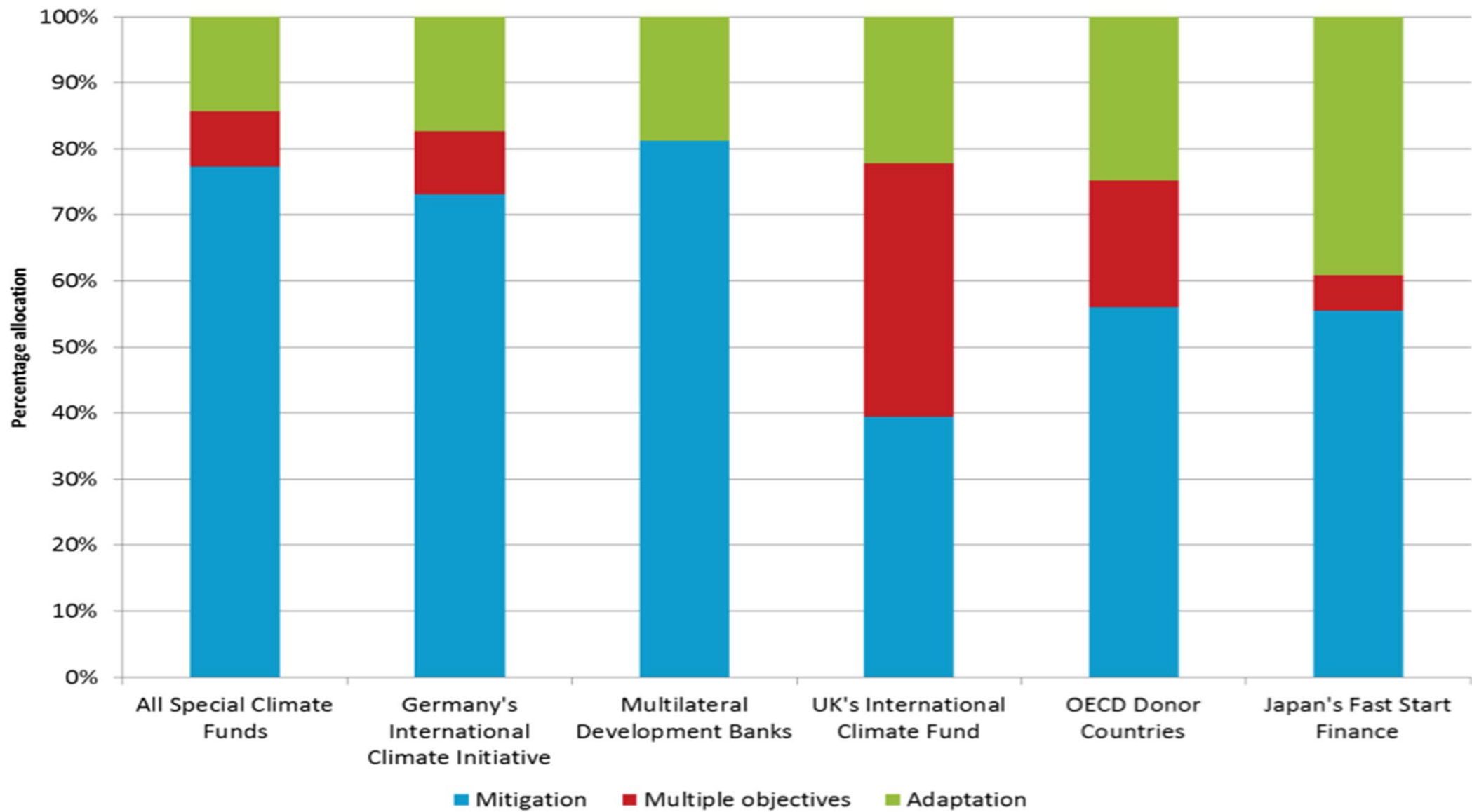
Quality of measurement and reporting:

Relatively certain

Medium certainty

Relatively uncertain

Balance in Commitments for Adaptation and Mitigation



STRATEGY OF ADAPTATION/MITIGATION BY REFORESTATION OF DEGRADED FORESTS AND AVOIDDED DEFORESTATION

Bonn Challenge, 2011-2020, 150 million hectares, USD\$36 billion per year.

New York Declaration on Forests, 2014-2030, 350 million hectares, USD\$49 billion per year.

ODS 15.3, 2015-2030, 2 billion hectares, USD\$318 billion/year

20X20, 2013-2020, 20 million hectares, US\$855 millions/total

FCPF, 2009-2017, US\$829 millones

STRATEGY OF CONCESSIONS

DESIGN, FINANCE, CONSTRUCT, OPERATE, TRANSFER (DFBOT)

PURCHASING POWER AGREEMENTS (PPAs)

AVAILABILITY AGREEMENTS

Renewable energy from 25% in 2007 to 56% IN 2015 with
contracted portfolio for 90% in 2020

Grand Interoceanic Canal & Multimodal World and
Regional Logistical Center

CONTINGENCY INSURANCE

PROJECT GUARANTEE FUND MULTIPLIER FOR }GCF, GEF



THANK
YOU!